



Lynchburg, Virginia

---

# Municipal Separate Storm Sewer System Annual Report

For

General Permit No. VAR040118

Permit Year

July 1, 2021 through June 30, 2022

This annual report is submitted in accordance with 9VAC25-890-40 as part of the requirement for permit coverage to discharge stormwater to surface waters of the Commonwealth of Virginia consistent with the VAR04 General Permit effective per letter dated November 1, 2018.

Submitted: September 30, 2022

## TABLE OF CONTENTS

1.0 GENERAL ANNUAL REPORTING REQUIREMENTS.....	1
1.1. General Information (Part I.D.2.a) .....	1
1.2. Reporting Period (Part I.D.2.b) .....	1
1.3. Signed Certification (Part I.D.2.c) .....	1
1.4. Reporting for MCMs #1 - #6 (Part I.D.2.d) .....	1
1.5. Evaluation of the MS4 Program Implementation (Part I.D.2.e) .....	2
2.0 MINIMUM CONTROL MEASURES .....	3
2.1. MCM #1: Public Education and Outreach .....	3
2.1.1. High Priority Stormwater Issues (Part I.E.1.g(1)) .....	3
2.1.2. High Priority Stormwater Issue Communication Strategies (Part I.E. 1.g(2)) .....	3
2.1.3. MCM #1 Evaluation (Part I.D.2.e) .....	3
2.2. MCM #2: Public Involvement and Participation .....	5
2.2.1. Public Input Summary (Part I.E.2.f(1)) .....	5
2.2.2. MS4 Program Webpage (Part I.E.2.f(2)).....	5
2.2.3. Public Involvement Activities Implemented (Part I.E.2.f(3)) .....	6
2.2.4. Public Involvement Activity Metric and Evaluation (Part I.E.2.f(4)) .....	6
2.2.5. MS4 Collaboration (Part I.E.2.f(5)).....	6
2.2.6. MS4 Program Plan BMP Measurable Goals .....	7
2.2.7. MCM #2 Evaluation (Part I.D.2.e) .....	7
2.3. MCM #3: Illicit Discharge Detection and Elimination .....	9
2.3.1. MS4 Map and Information Table (Part I.E.3.e(1)).....	9
2.3.2. Dry Weather Screening (Part I.E.3.e(2)) .....	9
2.3.3. Illicit Discharges (Part I.E.3.e(3)).....	9
2.3.4. MS4 Program Plan BMP Measurable Goals .....	10
2.3.5. MCM #3 Evaluation (Part I.D.2.e) .....	10
2.4. MCM #4: Construction Site Stormwater Runoff Control .....	11
2.4.1. Implementation of Standards and Specifications (Part I.E.4.a(3)) .....	11
2.4.1.1. Conforming Land Disturbance Projects (Part I.E.4.d(1)(a)).....	11
2.4.1.2. Non-Conforming Land Disturbance Projects (Part I.E.4.d(1)(b)) .....	11
2.4.2. Site Stormwater Runoff Inspections (Part I.E.4.d(2)) .....	11
2.4.3. Enforcement Actions (Part I.E.4.d(3)).....	12
2.4.4. MCM #4 Evaluation (Part I.D.2.e) .....	12
2.5. MCM #5: Post-Construction Stormwater Management.....	13
2.5.1. Implementation of Standards and Specifications (Part I.E.5.a(3)) .....	13
2.5.2. Stormwater Management Facility Inspections (Part I.E.5.i(2)).....	13
2.5.3. Stormwater Management Facility Maintenance (Part I.E.5.i(3)) .....	13
2.5.4. Virginia Construction Stormwater General Permit Database (Part I.E.5.i(4)) .....	14
2.5.5. DEQ BMP Warehouse (Part I.E.5.i(5)).....	14

2.5.6. MS4 Program Plan BMP Measurable Goals .....	15
2.5.7. MCM #5 Evaluation (Part I.D.2.e) .....	15
2.6. MCM #6: Pollution Prevention and Good Housekeeping .....	16
2.6.1. Operational Procedures (Part I.E.6.q(1)) .....	16
2.6.2. Newly Developed SWPPPs (Part I.E.6.q(2)).....	16
2.6.3. Modified or Delisted SWPPPs (Part I.E.6.q(3)).....	17
2.6.4. Newly Developed Nutrient Management Plans (Part I.E.6.q(4)).....	17
2.6.4.1. Nutrient Management Plan Acreage (Part I.E.6.q(4)(a)).....	17
2.6.4.2. Nutrient Management Plan Approval Date (Part I.E.6.q(4)(b)) .....	17
2.6.5. Training Events (Part I.E.6.q(5)) .....	18
2.6.5.1. Training Dates (Part I.E.6.q(5)(a)).....	18
2.6.5.2. Quantity Trained (Part I.E.6.q(5)(b)).....	18
2.6.5.3. Training Objective (Part I.E.6.q(5)(c)) .....	18
2.6.6. MS4 Program Plan BMP Measurable Goals .....	19
2.6.7. MCM #6 Evaluation (Part I.D.2.e) .....	20
3.0 TMDL SPECIAL CONDITIONS .....	21
3.1. Chesapeake Bay TMDL Action Plan .....	21
3.1.1. BMPs Implemented and Estimated POC Reductions (Part II.A.13.a) .....	21
3.1.2. Nutrient Credits (Part II.A.13.b).....	21
3.1.3. POC Cumulative Reduction Progress (Part II.A.13.c) .....	22
3.1.4. Next Reporting Period Planned BMPs (Part II.A.13.d).....	23
3.1.5. Chesapeake Bay TMDL Action Plan Measurable Goals .....	23
3.1.6. Chesapeake Bay TMDL Action Plan Implementation Evaluation (Part I.D.2.e).....	23
3.2. Local TMDL Action Plan .....	25
3.2.1. James River-Lynchburg Bacteria TMDL Implementation (Part II.B.9) .....	25

## APPENDICES

Appendix A: Documentation of Public Education and Outreach Activities

Appendix B: Documentation of Public Involvement Activities

## TABLES

Table 1: Summary of MS4 Program Plan Changes .....	2
Table 2: High Priority Stormwater Issues.....	3
Table 3: Public Involvement Activities Implemented .....	6
Table 4: MS4 Program Plan BMP Measurable Goals for MCM #2.....	7
Table 5: Illicit Discharges .....	9
Table 6: MS4 Program Plan BMP Measurable Goals for MCM #3.....	10
Table 7: Project(s) Not in Conformance with Approved Standards and Specifications.....	11
Table 8: Construction Project(s) .....	12
Table 9: Maintenance Activities Performed on Stormwater Management Facilities .....	13
Table 10: MS4 Program Plan BMP Measurable Goals for MCM #5.....	15
Table 11: Good Housekeeping Operational Procedures Developed or Modified .....	16
Table 12: New SWPPPs Developed .....	16
Table 13: SWPPPs Modified or Delisted.....	17
Table 14: New Turf and Landscape Nutrient Management Plans .....	18
Table 15: Training Events.....	18
Table 16: MS4 Program Plan BMP Measurable Goals for MCM #6.....	19
Table 17: Chesapeake Bay TMDL Action Plan POC Reductions.....	21
Table 18: 2019 – 2023 Chesapeake Bay TMDL Action Plan Implementation Schedule .....	22
Table 19: Chesapeake Bay TMDL Action Plan BMPs Planned for the next reporting year.....	23
Table 20: Chesapeake Bay TMDL Action Plan Measurable Goals .....	23
Table 21: James River Tidal E.coli TMDL Action Plan Summary of Actions .....	25

## ACRONYMS

BMP	Best Management Practices
DEQ	Virginia Department of Environmental Quality
MCM	Minimum Control Measure
MS4	Municipal Separate Storm Sewer System
POC	Pollutants of Concern
SWPPP	Stormwater Pollution Prevention Plan
TMDL	Total Maximum Daily Load
VCCS	Virginia Community College System
VPDES	Virginia Pollution Discharge Elimination System
WLA	Wasteload Allocation



## 1.0 GENERAL ANNUAL REPORTING REQUIREMENTS

### 1.1. General Information (Part I.D.2.a)

Permittee Name: Central Virginia Community College

System Name: Virginia Community College System

Permit Number: VAR040118

### 1.2. Reporting Period (Part I.D.2.b)

The reporting period for which the annual report is being submitted:

July 1, 2021 through June 30, 2022


### 1.3. Signed Certification (Part I.D.2.c)

A signed certification as per Part III K:

"I certify under penalty of law that this document and all attachments were prepared under my direction or supervision in accordance with a system designed to ensure that qualified personnel properly gather and evaluate the information submitted. Based on my inquiry of the person or persons who manage the system, or those persons directly responsible for gathering the information, the information submitted is, to the best of my knowledge and belief, true, accurate, and complete. I am aware that there are significant penalties for submitting false information, including the possibility of fine and imprisonment for knowing violations."

Printed Name: Lewis Bryant

Title: Vice President of Financial and Administrative Services

Signature:  Date: 9/29/2022

### 1.4. Reporting for MCMs #1 - #6 (Part I.D.2.d)

Include information for each annual reporting item specified in Part I.E:

Reporting information for each Minimum Control Measure is provided in Section 2.0.

### **1.5. Evaluation of the MS4 Program Implementation (Part I.D.2.e)**

An evaluation of the MS4 program implementation, including a review of each MCM to determine the MS4 program's effectiveness and whether changes to the MS4 Program Plan are necessary:

An evaluation for each Minimum Control Measure is provided in Section 2.0. Changes that are necessary to be made to the MS4 Program Plan are summarized in Table 1.

Table 1: Summary of MS4 Program Plan Changes
None

## 2.0 MINIMUM CONTROL MEASURES

### 2.1. MCM #1: Public Education and Outreach

#### 2.1.1. High Priority Stormwater Issues (Part I.E.1.g(1))

A list of high-priority stormwater issues addressed in the public education and outreach program:

A list of high-priority stormwater issues addressed in public education and outreach program is provided in Table 2.

#### 2.1.2. High Priority Stormwater Issue Communication Strategies (Part I.E. 1.g(2))

A list of strategies used to communicate each high-priority stormwater issue:

A list of strategies used to communicate each high-priority stormwater issue is provided in Table 2. Appendix A includes documentation of the communication efforts in Table 2.

Table 2: High Priority Stormwater Issues					
#	Stormwater Issue	Strategy	Communication	Metric	Beneficial
1	Public Education on Stormwater Runoff	Traditional written materials	Brochure distributed via email	Approx. 4,450 faculty, students and staff	<input checked="" type="checkbox"/> Yes <input type="checkbox"/> No
2	Public Education on TMDLs and Local Impaired Waters	Signage	Implement groundhog exterior Sign	Approx. 4,450 faculty, students and staff	<input checked="" type="checkbox"/> Yes <input type="checkbox"/> No
3	Public Education on Pollution Prevention from Public Activities	Media materials	Graphic media placed on TV monitor in public frequented areas	Approx. 4,450 faculty, students and staff	<input checked="" type="checkbox"/> Yes <input type="checkbox"/> No

#### 2.1.3. MCM #1 Evaluation (Part I.D.2.e)

Review the MCM to determine the MS4 Program's effectiveness and whether or not changes to the MS4 Program Plan are necessary:

Were all MCM #1 measurable goals completed in accordance with the MS4 Program Plan?

☒ Yes ☐ No ( )

Are the MS4 Program measurable goals effective?

☒ Yes (Effective)   ☐ No (Ineffective, necessary changes to the MS4 Program are included in Section 1.5.)

## **2.2. MCM #2: Public Involvement and Participation**

### **2.2.1. Public Input Summary (Part I.E.2.f(1))**

A summary of any public input on the MS4 program received (including stormwater complaints) and responses:

Were any MS4 Program inputs or stormwater complaints received from the public?

☐ Yes ☒ No

If yes, were responses provided? ☐ Yes ☐ No

### **2.2.2. MS4 Program Webpage (Part I.E.2.f(2))**

A webpage address to the MS4 program and stormwater website:

The webpage address is <https://www.centralvirginia.edu/Facilities-Management>

### 2.2.3. Public Involvement Activities Implemented (Part I.E.2.f(3))

A description of the public involvement activities implemented:

A description of the implemented public involvement activities is provided in Table 3.

### 2.2.4. Public Involvement Activity Metric and Evaluation (Part I.E.2.f(4))

A report of the metric as defined for each activity and an evaluation as to whether or not the activity is beneficial to improving water quality:

A report of the metric as defined for each activity and an evaluation as to whether or not the activity is beneficial to improving water quality is provided in Table 3. Appendix B includes documentation of the public involvement activities.

Table 3: Public Involvement Activities Implemented					
#	Activity Description/Date	Category	Metric	Collaboration	Beneficial
1	Bird Art Contest for TMDL Signage - 5/17/2022	Pollution Prevention	Email sent to 4,450 people, 0 participants	No	<input checked="" type="checkbox"/> Yes* <input type="checkbox"/> No
2	Educational videos on website & rubber duck give-a-way incentive - 2/17/2022 & 5/17/2022	Educational	Email sent to 4,450 people, 182 participants	No	<input checked="" type="checkbox"/> Yes <input type="checkbox"/> No
3	Graduation Event Booth 5/12/2022	Educational	6 brochures	No	<input checked="" type="checkbox"/> Yes <input type="checkbox"/> No
4	CVCC Nature Trail Trash Pick up 3/18/2022	Restoration	16 participants	No	<input checked="" type="checkbox"/> Yes <input type="checkbox"/> No

\* Although no one participated in the spring semester bird art contest, CVCC believes the contest was worth the attempt and key information about pollution prevention was disseminated.

### 2.2.5. MS4 Collaboration (Part I.E.2.f(5))

The name of other MS4 permittees collaborated with in the public involvement opportunities:

If applicable, the name of other MS4 permittees collaborated with for any of the public involvement opportunities are provided in Table 3.

### 2.2.6. MS4 Program Plan BMP Measurable Goals

The MS4 Program Plan BMPs measurable goals are provided in Table 4.

Table 4: MS4 Program Plan BMP Measurable Goals for MCM #2		
BMP	Measurable Goal	Completeness Status
2.1	Was documentation of the public input or complaints on the MS4 program and MS4 Program Plan maintained?	<input type="checkbox"/> Yes <input type="checkbox"/> No <input checked="" type="checkbox"/> Not Applicable (No comments received)
2.1	Is the effective MS4 permit and coverage letter on the webpage?	<input checked="" type="checkbox"/> Yes <input type="checkbox"/> No
2.1	Is the most current MS4 Program Plan on the webpage?	<input checked="" type="checkbox"/> Yes <input type="checkbox"/> No
2.1	Is the annual report for each year of the term covered by this permit no later than 30 days after submittal to the department on the webpage?	<input checked="" type="checkbox"/> Yes <input type="checkbox"/> No <input type="checkbox"/> Not Applicable (First permit year)
2.1	Is there a mechanism for the public to report potential illicit discharges, improper disposal or spills to the MS4, complaints regarding land disturbing activities or other potential stormwater pollution concerns on the webpage?	<input checked="" type="checkbox"/> Yes <input type="checkbox"/> No
2.1	Is there a method for how the public can provide input of the MS4 Program Plan on the webpage?	<input checked="" type="checkbox"/> Yes <input type="checkbox"/> No
2.1	Is the latest Virginia Community College System Annual Standards and Specifications on the webpage?	<input checked="" type="checkbox"/> Yes <input type="checkbox"/> No

### 2.2.7. MCM #2 Evaluation (Part I.D.2.e)

Review the MCM to determine the MS4 Program's effectiveness and whether or not changes to the MS4 Program Plan are necessary:

Were all MCM #2 measurable goals completed in accordance with the MS4 Program Plan?

☒ Yes ☐ No ( )

Are the MS4 Program measurable goals effective?

☒ Yes (Effective)   ☐ No (Ineffective, necessary changes to the MS4 Program are included in Section 1.5.)



## 2.3. MCM #3: Illicit Discharge Detection and Elimination

### 2.3.1. MS4 Map and Information Table (Part I.E.3.e(1))

A confirmation statement that the MS4 map and information table have been updated to reflect any changes to the MS4 occurring on or before June 30 of the reporting year:

Were the MS4 storm sewer map and outfall information table updated to reflect any changes to the MS4 occurring on or before June 30 of the reporting year?

☒ Yes ☐ No ( ) ☐ Not Applicable (No changes required)

### 2.3.2. Dry Weather Screening (Part I.E.3.e(2))

The total number of outfalls screened during the reporting period as part of the dry weather screening program:

Were outfalls screened during the reporting period? ☒ Yes ☐ No ( )

The number of outfalls screened during the reporting yard as part of the dry weather screening program is 18. This represents 100% of the total outfalls.

### 2.3.3. Illicit Discharges (Part I.E.3.e(3))

A list of illicit discharges to the MS4 including spills reaching the MS4:

Were there any illicit discharges to the MS4 including spills reaching the MS4?

☐ Yes (Refer to Table 5) ☒ No

**Table 5: Illicit Discharges**

Illicit Discharge Not Applicable

Part I.E.3.e(3)(a) Source:

Part I.E.3.e(3)(b) Date Observed & Date Reported:

Part I.E.3.e(3)(c) Detected during Screening, Reported by Public or Other (Describe):

Part I.E.3.e(3)(d) Investigation Resolution:

Part I.E.3.e(3)(e) Description of Follow-up Activities:

Part I.E.3.e(3)(f) Date Investigation Closed:

### 2.3.4. MS4 Program Plan BMP Measurable Goals

The MS4 Program Plan BMPs measurable goals are provided in Table 6.

Table 6: MS4 Program Plan BMP Measurable Goals for MCM #3		
BMP	Measurable Goal	Completeness Status
3.1	Was a GIS compatible shapefile submitted to DEQ?	Completed
3.1	Was written notification provided to any downstream adjacent MS4 of any known interconnection established or discovered during the permit reporting year?	<input type="checkbox"/> Yes <input checked="" type="checkbox"/> Not Applicable (No new or discovered) <input type="checkbox"/> No
3.2	Did all students, faculty and staff have access to the Standards of Conduct for Employees and the Student Handbook for Students?	<input checked="" type="checkbox"/> Yes <input type="checkbox"/> No
3.3	Were illicit discharge detection and elimination procedures implemented, enforced and documentation maintained?	<input checked="" type="checkbox"/> Yes <input type="checkbox"/> No

### 2.3.5. MCM #3 Evaluation (Part I.D.2.e)

Review the MCM to determine the MS4 Program's effectiveness and whether or not changes to the MS4 Program Plan are necessary:

Were all MCM #3 measurable goals completed in accordance with the MS4 Program Plan?

☒ Yes ☐ No ( )

Are the MS4 Program measurable goals effective?

☒ Yes (Effective) ☐ No (Ineffective, necessary changes to the MS4 Program are included in Section 1.5.)

## 2.4. MCM #4: Construction Site Stormwater Runoff Control

### 2.4.1. Implementation of Standards and Specifications (Part I.E.4.a(3))

The MS4 implements a construction site stormwater runoff program in accordance with the most recent DEQ approved Standards and Specifications in compliance with the Virginia Erosion and Sediment Control Law and Virginia Erosion and Sediment Control Regulations.

#### 2.4.1.1. Conforming Land Disturbance Projects (Part I.E.4.d(1)(a))

A confirmation statement that land disturbing projects that occurred during the reporting period have been conducted in accordance with the current department approved standards and specifications for erosion and sediment control:

Were all land disturbing projects that occurred during the reporting period conducted in accordance with the current department approved standards and specifications for erosion and sediment control?

☐ Yes ☐ No (Refer to Table 7) ☒ Not Applicable (No land disturbing projects)

#### 2.4.1.2. Non-Conforming Land Disturbance Projects (Part I.E.4.d(1)(b))

If one or more of the land disturbing projects were not conducted with the department standards and specifications, an explanation as to why the projects did not conform to the approved standards and specifications:

An explanation as to why a project did not conform to the approved standards and specifications are provided in Table 7.

**Table 7: Project(s) Not in Conformance with Approved Standards and Specifications**

Project Name: Not Applicable

Explanation:

### 2.4.2. Site Stormwater Runoff Inspections (Part I.E.4.d(2))

Total number of inspections conducted:

The total number of site stormwater runoff inspections conducted for regulated land disturbance activities in accordance with the most recent DEQ approved Standards and Specifications are provided in Table 8.

### 2.4.3. Enforcement Actions (Part I.E.4.d(3))

The total number and type of enforcement actions implemented:

The total number of enforcement actions implemented, Notices to Comply issued, and Stop Work Orders issued by CVCC to the contractor are provided in Table 8.

Table 8: Construction Project(s)				
Project Name(s)	Total Inspections	Total Notices to Comply	Total Stop Work Orders	Total Enforcement Actions
Not Applicable				

### 2.4.4. MCM #4 Evaluation (Part I.D.2.e)

Review the MCM to determine the MS Program's effectiveness and whether or not changes to the MS4 Program Plan are necessary:

Were all MCM #4 measurable goals completed in accordance with the MS4 Program Plan?

☒ Yes ☐ No ( )

Are the MS4 Program measurable goals effective?

☒ Yes (Effective) ☐ No (Ineffective, necessary changes to the MS4 Program are included in Section 1.5.)

## 2.5. MCM #5: Post-Construction Stormwater Management

### 2.5.1. Implementation of Standards and Specifications (Part I.E.5.a(3))

The MS4 implements the most recent DEQ approved standards and specifications and a stormwater management facility inspection and maintenance program in accordance with Part I.E.5.b.

### 2.5.2. Stormwater Management Facility Inspections (Part I.E.5.i(2))

Total number of inspections conducted on stormwater management facilities owned or operated by the permittee:

Were inspections conducted on stormwater management facilities during the reporting year? ☒ Yes ☐ No

The total number of inspections conducted on stormwater management facilities are 2.

### 2.5.3. Stormwater Management Facility Maintenance (Part I.E.5.i(3))

A description of significant maintenance, repair, or retrofit activities performed on the stormwater management facilities owned or operated by the permittee to ensure it continues to perform as designed. This does not include routine activities such as grass mowing or trash collection:

Were significant maintenance, repair, or retrofit activities performed on any stormwater management (SWM) facilities during the reporting year?

☐ Yes ☒ No (Repairs were implemented outside of the reporting year and will be reported in next year's annual report.)

If yes, a description of significant maintenance, repair, or retrofit activities performed on the stormwater management facilities owned or operated by the MS4 to ensure it continues to perform as designed is provided in Table 9.

**Table 9: Maintenance Activities Performed on Stormwater Management Facilities**

Stormwater Management Facility	Significant Maintenance Activity
Not Applicable	

**2.5.4. Virginia Construction Stormwater General Permit Database (Part I.E.5.i(4))**

A confirmation statement that the permittee submitted stormwater management facility information through the Virginia Construction Stormwater General Permit database for those land disturbing activities for which the permittee was required to obtain coverage under the General VPDES Permit for Discharges of Stormwater from Construction Activities in accordance with Part I E 5 f or a statement that the Permittee did not complete any projects requiring coverage under the General VPDES Permit for Discharges of Stormwater form Construction Activities:

Stormwater management facility information for stormwater facilities installed after July 1, 2014 was submitted through the Virginia Construction Stormwater General Permit database for land disturbing activities requiring a General VPDES Permit for Discharges of Stormwater from Construction Activities?

☒ Not Applicable (Not a VSMP authority)

**2.5.5. DEQ BMP Warehouse (Part I.E.5.i(5))**

A confirmation statement that the permittee electronically reported BMPs using the DEQ BMP Warehouse in accordance with Part I E 5 g and the date on which the information was submitted:

No later than October 1 of each year, stormwater management facilities and BMPs implemented to meet a TMDL load reduction between July 1 and June 30 of each year were electronically reported using the DEQ BMP Warehouse for any practices not reported in accordance with Part I.E.5.f (requirement 2.5.4) including stormwater management facilities from land disturbing activities less than one acre in accordance with the Chesapeake Bay Preservation Act regulations and for which a General VPDES Permit for Discharges of Stormwater from Construction Activities was not required?

☐ Yes, Date Submitted:                      ☐ No    ☒ Not Applicable (No qualifying structural SWM facilities constructed.)

### 2.5.6. MS4 Program Plan BMP Measurable Goals

The MS4 Program Plan BMPs measurable goals are provided in Table 10.

Table 10: MS4 Program Plan BMP Measurable Goals for MCM #5		
BMP	Measurable Goal	Completeness Status
5.1	Was the post-construction stormwater management inspection and maintenance program implemented in accordance with approved standards and specifications?	<input checked="" type="checkbox"/> Yes <input type="checkbox"/> No
5.2	Was the stormwater management facility tracking database updated?	<input checked="" type="checkbox"/> Yes <input type="checkbox"/> No

### 2.5.7. MCM #5 Evaluation (Part I.D.2.e)

Review the MCM to determine the MS4 program's effectiveness and whether or not changes to the MS4 Program Plan are necessary:

Were all MCM #5 measurable goals completed in accordance with the MS4 Program Plan?

☒ Yes ☐ No ( )

Are the MS4 Program measurable goals effective?

☒ Yes (Effective) ☐ No (Ineffective, necessary changes to the MS4 Program are included in Section 1.5.)

## 2.6. MCM #6: Pollution Prevention and Good Housekeeping

### 2.6.1. Operational Procedures (Part I.E.6.q(1))

A summary of any operational procedures developed or modified in accordance with Part I E 6 a during the reporting period:

Were any operational procedures developed or modified in accordance with Part I E 6 a during the reporting period?

☐ Yes (Refer to Table 11) ☒ No (No modifications required.)

**Table 11: Good Housekeeping Operational Procedures Developed or Modified**

Not Applicable

### 2.6.2. Newly Developed SWPPPs (Part I.E.6.q(2))

A summary of any new SWPPPs developed in accordance Part I E 6 c during the reporting period:

Were any new SWPPPs developed in accordance Part I E 6 c during the reporting period?

☐ Yes (Refer to Table 12) ☐ No ( ) ☒ Not Applicable (No new high priority facilities.)

**Table 12: New SWPPPs Developed**

SWPPP Name	SWPPP Address
Not Applicable	



### 2.6.3. Modified or Delisted SWPPPs (Part I.E.6.q(3))

A summary of any SWPPPs modified in accordance with Part I E 6 f or the rationale of any high priority facilities delisted in accordance with Part I E 6 h during the reporting period:

Were any SWPPPs modified after any unauthorized discharge, release, or spill reported?  
☐ Yes (Refer to Table 13) ☐ No ( ) ☒ Not Applicable (No illicit discharges.)

Were any high priority facilities delisted in accordance with Part I E 6 h during the reporting period? ☐ Yes (Refer to Table 13) ☒ No

If yes, rationale is provided for any high priority facilities delisted in accordance with Part I E 6 h during the reporting period in Table 13.

Table 13: SWPPPs Modified or Delisted	
<b>SWPPP Modification</b>	
Not Applicable	
<b>Rationale for Delisting</b>	
Not Applicable	

### 2.6.4. Newly Developed Nutrient Management Plans (Part I.E.6.q(4))

A summary of new turf and landscape nutrient management plans developed:

Were any new turf and landscape nutrient management plans developed?  
☒ Yes (Refer to Table 14) ☐ No ( ) ☐ Not Applicable (Existing NMPs in place. No new NMP required this reporting year.)

#### 2.6.4.1. Nutrient Management Plan Acreage (Part I.E.6.q(4)(a))

The location and the total acreage of each land area:

If yes is checked above, the location and total acreage of the land area for any newly developed nutrient management plan is provided in Table 14.

#### 2.6.4.2. Nutrient Management Plan Approval Date (Part I.E.6.q(4)(b))

The date of the approved nutrient management plan:

If yes is checked above, the approval date of any newly developed nutrient management plan is provided in Table 14.

**Table 14: New Turf and Landscape Nutrient Management Plans**

Location	Total Acreages	Date Approved
3506 Wards Road, Lynchburg, VA 24502	20.74	7/25/2022

**2.6.5. Training Events (Part I.E.6.q(5))**

A list of the training events conducted in accordance with Part I.E.6.m, including the following information:

Was training conducted?

☐ Yes ☐ No ( ) ☒ Not Applicable (Not required this reporting year.)

If yes is checked above, a list of training events conducted in accordance with Part I.E.6.m is provided in Table 15.

**2.6.5.1. Training Dates (Part I.E.6.q(5)(a))**

The date of the training event:

If yes is checked above, the date of the training event is provided in Table 15.

**2.6.5.2. Quantity Trained (Part I.E.6.q(5)(b))**

The number of employees who attended the training event:

If yes is checked above, the number of employees who attended the training event is provided in Table 15.

**2.6.5.3. Training Objective (Part I.E.6.q(5)(c))**

The objective of the training event:

If yes is checked above, the objective of the training event is provided in Table 15.

**Table 15: Training Events**

Date	# of Attendees	Training Objective
Not Applicable		

### 2.6.6. MS4 Program Plan BMP Measurable Goals

The MS4 Program Plan BMPs measurable goals are provided in Table 16.

Table 16: MS4 Program Plan BMP Measurable Goals for MCM #6		
BMP	Measurable Goal	Completeness Status
6.1	Was good housekeeping and pollution prevention biennial training conducted this reporting year?	<input type="checkbox"/> Yes <input checked="" type="checkbox"/> Not Applicable (Not required this reporting year.) <input type="checkbox"/> No
6.2	Was the annual comprehensive compliance evaluation conducted?	<input checked="" type="checkbox"/> Yes <input type="checkbox"/> No
6.2	Was the SWPPP reviewed within 30 days after an unauthorized discharge, release or spill reported?	<input type="checkbox"/> Yes <input checked="" type="checkbox"/> Not Applicable (No discharges, releases or spills; therefore, not required.) <input type="checkbox"/> No
6.2	Was the SWPPP updated within 90 days after an unauthorized discharge?	<input type="checkbox"/> Yes <input checked="" type="checkbox"/> Not Applicable (No discharges, releases or spills; therefore, not required.) <input type="checkbox"/> No
6.2	Were the MS4's properties reviewed this reporting year to determine if the properties meet the criteria of a high priority facility?	<input checked="" type="checkbox"/> Yes <input type="checkbox"/> No
6.3	Was the nutrient management plan implemented through completion of application records?	<input type="checkbox"/> Yes <input checked="" type="checkbox"/> Not Applicable (No nutrients applied.) <input type="checkbox"/> No
6.4	Were all signed contracts executed with contract good housekeeping and pollution prevention language?	<input checked="" type="checkbox"/> Yes <input type="checkbox"/> No
6.5	Did all signed contracts executed for pesticide and herbicide application maintain proof of certifications on file?	<input checked="" type="checkbox"/> Yes <input type="checkbox"/> Not Applicable (No contracts executed) <input type="checkbox"/> No
6.6	Did training occur and were proof of certifications maintained on file for employees performing pesticide and herbicide applications?	<input type="checkbox"/> Yes <input checked="" type="checkbox"/> Not Applicable (No employees applied pesticides/herbicides.) <input type="checkbox"/> No

**2.6.7. MCM #6 Evaluation (Part I.D.2.e)**

Review the MCM to determine the MS4 Program's effectiveness and whether or not changes to the MS4 Program Plan are necessary:

Were all MCM #6 measurable goals completed in accordance with the MS4 Program Plan?

☒ Yes ☐ No (      )

Are the MS4 Program measurable goals effective?

☒ Yes (Effective) ☐ No (Ineffective, necessary changes to the MS4 Program are included in Section 1.5.)

### 3.0 TMDL SPECIAL CONDITIONS

#### 3.1. Chesapeake Bay TMDL Action Plan

##### 3.1.1. BMPs Implemented and Estimated POC Reductions (Part II.A.13.a)

A list of BMPs implemented during the reporting period but not reported to the DEQ BMP Warehouse in accordance with Part I E 5 g and the estimated reduction of pollutants of concern achieved by each and reported in pounds per year:

Were any BMPs implemented during the reporting period but not reported to the DEQ BMP Warehouse in accordance with Part I.E.5.g?

☒ Yes (Refer to Table 17) ☐ No ( )

The estimated reduction of pollutants of concern achieved by each BMP reported in pounds per year is provided in Table 17.

Table 17: Chesapeake Bay TMDL Action Plan POC Reductions			
BMP #1: Street Sweeping Using the Mass Loading Approach			
Required pounds of material swept	743 lbs.		
Provided pounds of material swept	400* lbs.		
	TN (lbs./yr.)	TP (lbs./yr.)	TSS (lbs./yr.)
Required 5% Reduction (lbs.) =	1.30	.33	149.02
Provided Reduction (lbs.) =	.70	.28	84
Future Required 40% Reduction (lbs.) =	10.4	2.64	1,192.16
% Achieved towards 40% (%) =	15.4	29.2	24.2

\* CVCC contracted a vendor to sweep the campus twice. CVCC reasonably assumed two sweepings would have met the required reductions based on last permit year's pounds swept.

##### 3.1.2. Nutrient Credits (Part II.A.13.b)

If the permittee acquired credits during the reporting period to meet all or a portion of the required reductions in Part II A 3, A 4, or A 5, a statement that credits were acquired:

Were credits acquired during the reporting period to meet all or a portion of the required reductions in Part II A 3, A 4, or A 5? ☐ Yes ☒ No

### 3.1.3. POC Cumulative Reduction Progress (Part II.A.13.c)

The progress, using the final design efficiency of the BMPs, toward meeting the required cumulative reductions for total nitrogen, total phosphorus, and total suspended solids:

The progress, using the final design efficiency of the BMPs, toward meeting the required 40% reductions for total nitrogen, total phosphorus, and total suspended solids is provided in Table 18.

Table 18: 2019 – 2023 Chesapeake Bay TMDL Action Plan Implementation Schedule			
Step	General Description	Measurable Goal	Progress Status
1	5% reduction requirement complete. Evaluate lbs. swept.	Completed tracking documentation?	<input checked="" type="checkbox"/> Yes (July 2019) <input type="checkbox"/> No
2	5% reduction requirement complete. Make adjustments to frequency based on 2019 information obtained.	Completed tracking documentation with increase sweeping frequency?	<input checked="" type="checkbox"/> Yes (July 2020) <input type="checkbox"/> No
3	5% reduction requirement complete. Determine if 40% can be achieved w/ street sweeping alone. If not, evaluate alternate means to achieve 40% reduction. Secure funding for future implementation of new BMPs. Revise Action Plan accordingly.	Completed tracking documentation. If required, revise Action Plan?	<input checked="" type="checkbox"/> Yes (July 2021) <input type="checkbox"/> No
4	Revise Action Plan based on the newly issued DEQ Guidance Memo No. GM-20-2003 (Appendix V.G).	Completed tracking documentation and support documentation from any new BMPs employed to meet 40% reduction?	<input checked="" type="checkbox"/> Yes (July 2022) <input type="checkbox"/> No
5	Complete 40% reduction requirement with selected means and methods.	Completed tracking documentation and support documentation from any new BMPs employed to meet 40% reduction?	July 2023
6	Report on Chesapeake Bay TMDL 40% reduction achievement.	Recorded results in Annual Report?	October 2023

### 3.1.4. Next Reporting Period Planned BMPs (Part II.A.13.d)

A list of BMPs that are planned to be implemented during the next reporting period:

BMPs that are planned to be implemented during the next reporting period is provided in Table 19.

**Table 19: Chesapeake Bay TMDL Action Plan BMPs Planned for the next reporting year**

1. Street Sweeping

### 3.1.5. Chesapeake Bay TMDL Action Plan Measurable Goals

The Chesapeake Bay TMDL Action Plan measurable goals are provided in Table 20.

**Table 20: Chesapeake Bay TMDL Action Plan Measurable Goals**

#	Measurable Goal	Completeness Status
1	Were public comments considered during the required 15-day comment period?	<input type="checkbox"/> Yes <input checked="" type="checkbox"/> Not Applicable (Not required this reporting year) <input type="checkbox"/> No
2	Were cost effective BMPs selected to support model quantification to achieve the required pollutant reductions?	<input checked="" type="checkbox"/> Yes <input type="checkbox"/> Not Applicable (Not required this reporting year) <input type="checkbox"/> No
3	Was the required pollutant reduction reached for this reporting year?	<input type="checkbox"/> Yes <input checked="" type="checkbox"/> No

### 3.1.6. Chesapeake Bay TMDL Action Plan Implementation Evaluation (Part I.D.2.e)

Review the TMDL Special Condition to determine the Chesapeake Bay TMDL Action Plan's effectiveness and whether or not changes to the Chesapeake Bay TMDL Action Plan are necessary:

Were all measurable goals completed in accordance with the Chesapeake Bay TMDL Action Plan?

☐ Yes ☒ No (5% pollutant reduction was not reached.)

Are the MS4 Program measurable goals effective?

☒ Yes (Effective)   ☐ No (Ineffective, necessary changes to the MS4 Program are included in Section 1.5.)



## 3.2. Local TMDL Action Plan

### 3.2.1. James River-Lynchburg Bacteria TMDL Implementation (Part II.B.9)

A summary of actions conducted to implement each local TMDL action plan:

A summary of actions conducted to implement the James River Tidal Bacteria TMDL is provided in Table 21.

Table 21: James River Tidal E.coli TMDL Action Plan Summary of Actions			
BMP	Strategies	Method	Progress Status
1	Educate the public on how to reduce food sources accessible to urban wildlife and discourage the feeding of wildlife on campus.	Distribution of educational information	<input checked="" type="checkbox"/> Yes (July 2022) <input type="checkbox"/> No
2	Select at least one strategy from Table 1 and include in the MS4 Program Plan.	To be determined	June 30, 2023

## Appendix A: Documentation of Public Education and Outreach Activities

## High Priority Stormwater Issue #1

Reply all Delete Report ...

## RE: Central Virginia Community College MS4 Program Awareness Announcement and Bird Sketch

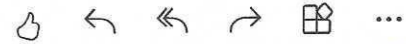
This message was sent with High importance.



Rocha Jr., John

To: Everyone

Cc: SRilveria@wetlands.com; Schrinel, Chris <CSchrinel@wetlands.com>



Tue 5/17/2022 10:55 AM

Good Morning!

To all CVCC Faculty, Students and Staff,

As summer gets closer, we want to remind everyone of CVCC'S commitment to keep our Stormwater systems clean here on campus by bringing awareness once again to our MS4 Stormwater program. We are required to monitor, and control, to the best of our ability, the amount of pollutants that enter our stormwater drains here on campus. By working together with our students and staff, we can cut down on the number of pollutants that could enter our water streams. These pollutants can be something as simple as trash like fast food wrappers, cigarette butts, or more serious pollutants such as chemicals, oil, gases, etc. that enter our storm water drains after being dumped on our parking lots or sidewalks. The pollutants could eventually find their way to our lakes, rivers, and streams, and could hinder our ability to enjoy and see nature as we would like to. Water pollution not only impacts our recreational activities that we love such as swimming, boating, and fishing, but it also affects wildlife that depend on our water sources to survive. Due to strict DEQ regulations, CVCC has implemented, and is required to follow a plan for Stormwater Management here on Campus. You can find a copy on our website at : <https://centralvirginia.edu/Facilities-Management> . Please see the attached a brochure that explains more about stormwater runoff, and how pollutants can lead to what is called an "Illicit Discharge", which are more significant. The college brings in a street sweeping crew to vacuum and sweep the parking lots and roads leading into campus to help cut down on the pollutants that could possibly enter our stormwater drains.

**There are several ways in which you can learn a little more about the MS4 program here at CVCC:**

1. Read the attached brochure about stormwater runoff and the impact it has on our environment and look at the attached flyer.
2. Go to our website @ <http://centralvirginia.edu/Campus-Life/Locations-Facilities/Facilities-Management/MS4-PSA-Videos> and watch several fun, short, Public Service Announcements that show a **ducks view** of how pollution affects our environment. The clips are very short, and we get credit for you watching them, so please go by and check them out!
3. Visit our main website @ <https://centralvirginia.edu/Facilities-Management> to learn more about our MS4 Program documentation we are required to maintain and abide by. Here you will find a **Good Housekeeping and Pollution Prevention Manual** that is very well written that has a lot of good information in it for your reference.



## RE: Central Virginia Community College MS4 Program Awareness Announcement and Bird Sketch

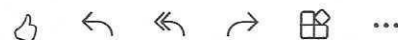
🔔 This message was sent with High importance.



Rocha Jr., John

To: Everyone

Cc: SRilveria@wetlands.com; Schrinel, Chris <CSchrinel@wetlands.com>



Tue 5/17/2022 10:55 AM

### James River

<https://jrac-va.org/>

James River State Park – Paddlers and Walkers

751 Park Road, Gladstone, VA 24553

Volunteers will be cleaning trash from the river and shoreline between Bent Creek and the park, which is about a 6 1/2-mile stretch of the James. Canoes, life vests, paddles and a guide will be provided to volunteers. Please come planning to get wet! Volunteers will be in and out of the boats to retrieve trash.

Check out their website for more information and announcements for upcoming Clean-up dates.

We take great pride in keeping our campus clean here at Central Virginia Community College. If you see something that needs to be addressed, please let our facilities Department know and we will address it. Please consider visiting our website for more information at <https://centralvirginia.edu/Facilities-Management>.

### And finally...Calling All Artist!!!

- We need your help! We have many types of wildlife here on campus that could be affected by trash or litter that is not placed in the appropriate trash receptacles. The litter, if laying on the ground, can cause problems for the wildlife that find it, or could make its way into our storm drains and water streams. Our grounds crew does a fantastic job of keeping our campus clean, but they can't do it alone. Continue to throw your trash in the appropriate containers so the wildlife cannot get to it, if you see it laying around somewhere, let us know! We also ask that you do not feed the birds or groundhogs when you see them on campus. We do not want to help the groundhog population multiply and have them removed from campus.

As part of our educational outreach, we are looking into posting some new exterior signage about the groundhogs and birds and their environmental impact on campus. **Here is where I need your help!** I am looking for volunteers to submit a black and white original drawing, or a black and white picture that you have taken of a **bird** that resides on campus that we could possibly use on one or more of the exterior signs we will be putting up as part of a MS4 sign design. The picture or drawing should be no bigger than an 8 ½ x 11, and will have to be scanned and edited, and the owner would have to agree to release the picture or drawing so the college could use it at their discretion.

We only want your original drawings or pictures please. We have so many talented artist and photographers amongst us, now is your chance to shine!!

Scan and Submit your Bird Pictures to [facilities@centralvirginia.edu](mailto:facilities@centralvirginia.edu) by **June 15<sup>th</sup>, 2022**. The Facilities Team will review all submissions and see if we can find the right picture to use for our new sign. If your artwork or picture is chosen, you will be notified. **This is open to all Faculty, Staff and Students!**

Look forward to seeing what you can do! Remember, I need them by June 15th!

Reply all
 Delete
 Report
 ...

## Central Virginia Community College MS4 Program Awareness Announcement

! This message was sent with High importance.

! You replied on Tue 5/17/2022 10:55 AM



Rocha Jr., John

To: Everyone

Cc: Rocha Jr., John; SRilveria@wetlands.com; Schrinel, Chris <CSchrinel@wet

...

Thu 2/17/2022 12:08 PM



CVCC PEOP.pdf  
950 KB



CVCC Stormwater Poster\_Stu...  
188 KB



2 attachments (1 MB) Save all to OneDrive - Central Virginia Community College Download all

Good Afternoon!

To all CVCC Faculty, Students and Staff,

As spring gets closer, we want to remind everyone of CVCC'S commitment to keep our Stormwater systems clean here on campus by bringing awareness once again to our MS4 Stormwater program. We are required to monitor, and control, to the best of our ability, the amount of pollutants that enter our stormwater drains here on campus. By working together with our students and staff, we can cut down on the number of pollutants that enter our water streams. These pollutants can be something as simple as trash like fast food wrappers, cigarette butts, or more serious pollutants such as chemicals, oil, gases, etc. that enter our storm water drains after being dumped in our parking lots or sidewalks. The pollutants could eventually find their way to our lakes, rivers, and streams, and could hinder our ability to enjoy and see nature as we would like to. Water pollution not only impacts our recreational activities that we love such as swimming, boating, and fishing, but it also affects wildlife that depend on our water sources to survive. Due to strict DEQ regulations, CVCC has implemented, and is required to follow a plan for Stormwater Management here on Campus. You can find a copy on our website at : <https://centralvirginia.edu/Facilities-Management> . Please see the attached a brochure that explains more about stormwater runoff, and how pollutants can lead to what is called an "Illicit Discharge", which are more significant. The college will be bringing in a street sweeping crew soon to vacuum and sweep the parking lots and roads leading into campus to help cut down on the pollutants that could possibly enter our stormwater drains.

There are several ways in which you can learn a little more about the MS4 program here at CVCC:

1. Read the attached brochure about stormwater runoff and the impact it has on our environment, and look at the attached flyer.
2. Go to our website @ <http://centralvirginia.edu/Campus-Life/Locations-Facilities/Facilities-Management/MS4-PSA-Videos> and watch several fun, short, Public Service Announcements that show a **ducks view** of how pollution affects our environment. The clips are very short, and we get credit for you watching them, so please go by and check them out!



## Central Virginia Community College MS4 Program Awareness Announcement

🔔 This message was sent with High importance.

🔔 You replied on Tue 5/17/2022 10:55 AM



Rocha Jr., John

To: Everyone

Thu 2/17/2022 12:08 PM

Cc: Rocha Jr., John; SRilveria@wetlands.com; Schrinel, Chris <CSchrinel@wet

The college will be bringing in a street sweeping crew soon to vacuum and sweep the parking lots and roads leading into campus to help cut down on the pollutants that could possibly enter our stormwater drains.

There are several ways in which you can learn a little more about the MS4 program here at CVCC:

1. Read the attached brochure about stormwater runoff and the impact it has on our environment, and look at the attached flyer.
2. Go to our website @ <http://centralvirginia.edu/Campus-Life/Locations-Facilities/Facilities-Management/MS4-PSA-Videos> and watch several fun, short, Public Service Announcements that show a **ducks view** of how pollution affects our environment. The clips are very short, and we get credit for you watching them, so please go by and check them out!
3. Visit our main website @ <https://centralvirginia.edu/Facilities-Management> to learn more about our MS4 Program documentation we are required to maintain and abide by. There is also a [Good Housekeeping and Pollution Prevention Manual](#) that is very well written.

There are also some community events where people can work together to try to make a difference. Here are several external websites that offer different opportunities for you to become more involved if you are interested:

### Lynchburg Virginia – Love where you Live

<https://www.lynchburgva.gov/lovewhereyoulive>

#### Annual Spring Cleanup

Each spring, the City of Lynchburg in partnership with Keep Lynchburg Beautiful hosts an annual spring cleanup. Citizens and volunteer groups are encouraged to meet at one central location in the city where they will be given cleanup supplies, a location will be assigned, and refreshments will be provided. Check out the link to check for upcoming dates.

### Chesapeake Bay Foundation

<https://www.cbf.org/events/clean-the-bay-day/>

The Annual Clean the Bay event for 2022 will last six days, Monday, May 30 to Saturday, June 4. They will be hosting their 33rd Annual Clean the Bay Day, and look forward to your interest and participation in this true Virginia tradition. Learn more about ways you can improve water-quality and environmental awareness by visiting their website!

## Central Virginia Community College MS4 Program Awareness Announcement

🔔 This message was sent with High importance.

🔔 You replied on Tue 5/17/2022 10:55 AM



Rocha Jr., John

To: Everyone

👍 ⏮ ⏪ ⏩ ⏭ ...

Thu 2/17/2022 12:08 PM

Cc: Rocha Jr., John; SRilveria@wetlands.com; Schrinel, Chris <CSchrinel@wet

tradition. Learn more about ways you can improve water-quality and environmental awareness by visiting their website!

### James River

<https://jrac-va.org/>

James River State Park – Paddlers and Walkers

751 Park Road, Gladstone, VA 24553

Volunteers will be cleaning trash from the river and shoreline between Bent Creek and the park, which is about a 6 1/2-mile stretch of the James. Canoes, life vests, paddles and a guide will be provided to volunteers. Please come planning to get wet! Volunteers will be in and out of the boats to retrieve trash.

Check out their website for more information and announcements for upcoming Clean-up dates.

We take great pride in keeping our campus clean here at Central Virginia Community College. If you see something that needs to be addressed, please let our facilities Department know and we will address it. Please consider visiting our website for more information at <https://centralvirginia.edu/Facilities-Management>.

You can help us make a difference!

Thank-you ,have a Great Day,  
John

John M. Rocha, Jr.

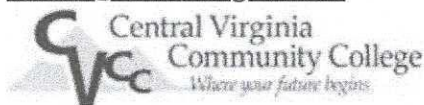
Facilities Director – Central Virginia Community College

3506 Wards Road

Lynchburg, VA 24502-2498

1-434-832-7725 or 1-540-529-0563

[RochaJ@centralvirginia.edu](mailto:RochaJ@centralvirginia.edu)



⏮ Reply

⏮ Reply all

➡ Forward



## Stormwater Issues?

**Flooding:** Stormwater runoff from intense rainfall can at times exceed the carrying capacity of the stormwater pipe system, creating a backup in the system which can lead to the flooding of roads, yards and structures.

**Pollution:** When rain falls, stormwater flows across grass and impervious surfaces such as sidewalks, driveways, parking lots, rooftops and roads. It mobilizes contaminants such as animal waste, chemicals, pesticides, trash and sediment. These contaminants are then transported downstream to streams, rivers and ultimately the ocean.

**Water quality:** Stormwater runoff is a leading cause of nutrient contamination, predominately responsible for algae blooms and low oxygen levels, which can result in fish kills and elimination of native vegetation.

**Soil erosion:** Uncontrolled stormwater rapidly increases the amount of water flowing into a stream, which can wash away stream banks and over time, cut streambeds down deeper to bedrock.



## CVCC's Stormwater Program

The U.S. Environmental Protection Agency (EPA) and the Virginia Department of Environmental Quality (DEQ) regulate stormwater and require most localities to implement and maintain a comprehensive stormwater management program. CVCC has a Municipal Separate Storm Sewer System (MS4) permit, which further obligates the college to manage their stormwater runoff and achieve an allocation of pollutant reductions. CVCC is required to meet specific pollutant TMDL (total maximum daily load) reductions for nitrogen, phosphorus, sediment, and E. coli. CVCC is working to implement measures that improve water quality in its waterways. Some of these measures include:

- Street sweeping to help prevent debris and sediment from being washed into the storm system and waterways
- Storm drain inspections to screen for illicit discharges
- Employee and public education on pollutants in stormwater runoff to help determine pollutant sources and increase public awareness.



Please visit CVCC's "Facilities Management" web page to find more detailed information or contact the Director of Facilities at 434.825.7736 or [facilities@centralvirginia.edu](mailto:facilities@centralvirginia.edu).

**[CentralVirginia.edu/Facilities-Management](http://CentralVirginia.edu/Facilities-Management)**



## Stormwater Runoff Impacts



Please visit CVCC's "Facilities Management" web page to find more detailed information or contact the Director of Facilities at 434.825.7736 or [facilities@centralvirginia.edu](mailto:facilities@centralvirginia.edu).

**[CentralVirginia.edu/Facilities-Management](http://CentralVirginia.edu/Facilities-Management)**

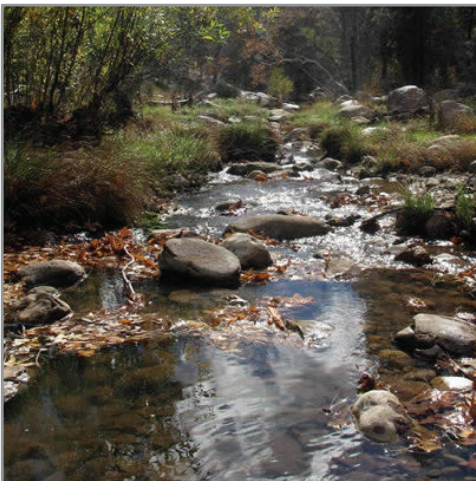
## What Is Stormwater Runoff?

Stormwater runoff is precipitation such as rain or snow that does not soak into the ground. Impervious surfaces such as driveways, parking lots, roofs, sidewalks and roads prevent stormwater runoff from naturally soaking into the ground. Stormwater runoff flows over vegetated areas and impervious surfaces into the storm sewer system and ultimately a natural waterway.



## Why is Stormwater Important?

As stormwater runoff flows over vegetated areas and impervious surfaces, it picks up pollutants such as pesticides, pet waste, oil and debris along the way. These pollutants are then carried through the storm sewer system and discharged to natural waterways. Urban stormwater runoff is the number one source of surface water pollution in the United States, causing public safety hazards, health risks and environmental threats.



## What is an Illicit Discharge?

Any substance other than stormwater that enters the storm sewer system or receiving waters is considered an illicit discharge. Many illicit discharge sources originate from maintenance facilities or construction sites, such as vehicle maintenance areas or equipment washout bays. Daily activities at these sites, specific spill incidents, or illegal dumping can result in illicit discharges. Examples of source pollutants include automotive fluids, paints, solvents, pesticides and herbicides, sediment, and trash.



Exceptions are made for non-stormwater discharges that do not significantly contribute pollutants to the storm sewer system, including fire-fighting activities, water line flushing, and landscape or lawn irrigation. These discharges may flow into the storm sewer or waterway without consequence.

Illicit discharges are significant due to the threat stormwater pollution poses to public safety, public health, and the environment. Due to the importance of reducing and preventing stormwater pollution, illicit discharges, potential sources for illicit discharges, and illegal dumping should be reported to the locality immediately so that appropriate corrective actions can be taken. Corrective and/or legal actions are taken as necessary.

## How Can I Report an Illicit Discharge?

If you see an illicit discharge, a potential source for an illicit discharge, or witness illegal dumping, you should contact the Director of Facilities.

## How Can I Help Reduce Stormwater Pollution?

- Pick up and properly dispose of pet waste
- Appropriately clean up vehicle fluid leaks and spills
- Properly dispose of hazardous substances such as automotive oil, cooking oil, paint, cleaners, etc.
- Exercise caution when using pesticides, herbicides, and fertilizers
- Report illicit discharges, potential illicit discharge sources, and any illegal dumping





# RAIN +

PET WASTE

GARBAGE

MEDICINES

**SOLVENTS**

ELECTRONIC DEVICES

ART SUPPLIES

FUELS

COOKING OIL

**MOTOR OIL**

INK CARTRIDGES

SEDIMENTS

GREASE

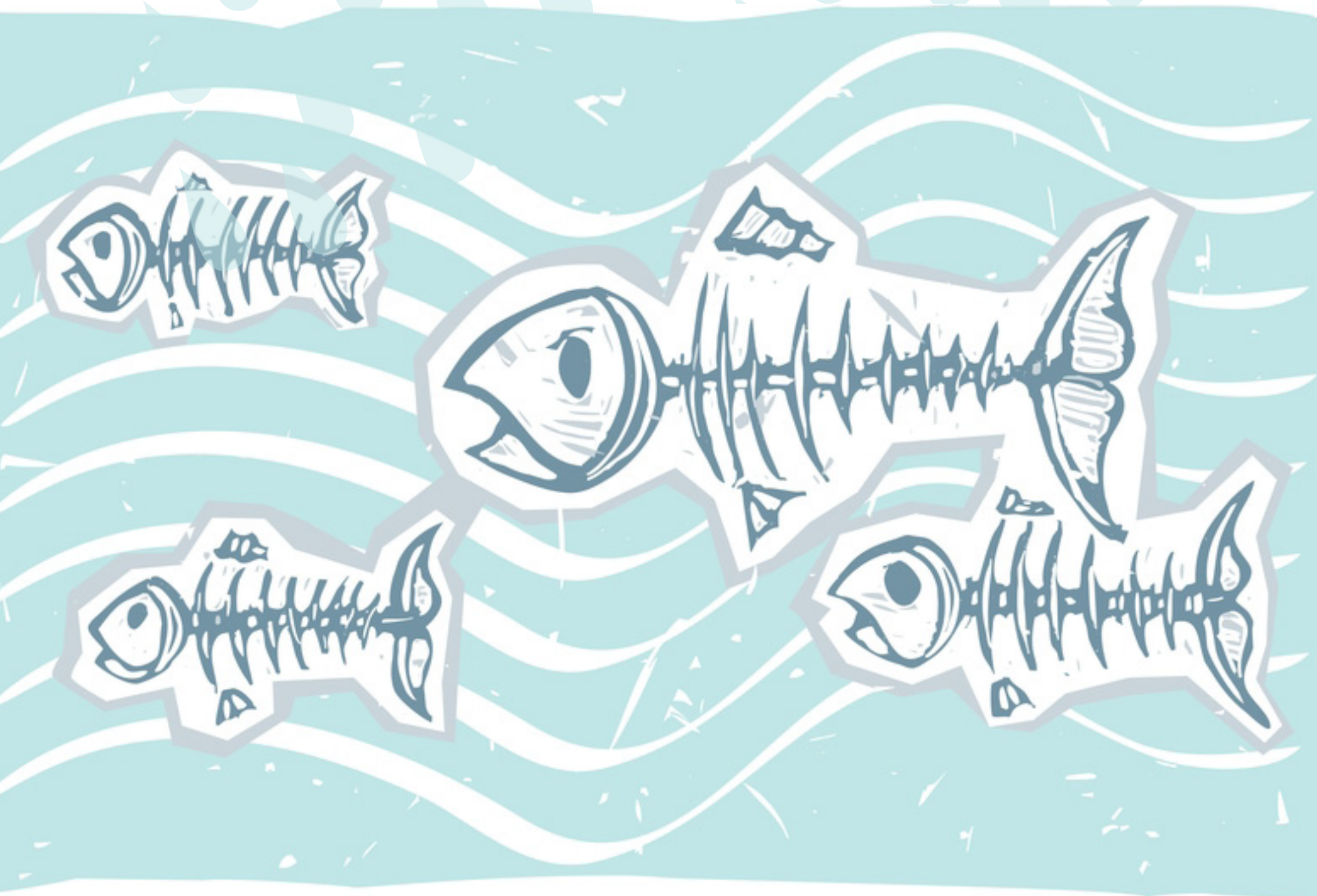
TOXINS

BATTERIES

**TRASH**

ANTIFREEZE

# STORMDRAIN=



Preventing storm water pollution is everyone's job at CVCC. Trash, litter and other materials tossed into our streets and on the ground are carried with rain and other water into storm drains. This mess ends up choking our waterways and can be a threat to humans and animal life. Learn more about ways to help keep pollutants out of our watersheds by visiting CVCC's website. Click on the search button, type "STORMWATER" in the search bar and select Facilities Management.

## High Priority Stormwater Issue #2



Groundhog Sign





### High Priority Stormwater Issue #3

**From:** [Rocha Jr., John](#)  
**To:** [Rilveria, Sara](#); [Schrinel, Chris](#)  
**Cc:** [Rocha Jr., John](#)  
**Subject:** Fw: MS4 Slide Presentations  
**Date:** Monday, September 26, 2022 11:36:01 AM  
**Attachments:** [CVCC Stormwater Slides CCTV 2020.pptx](#)  
**Importance:** High

---

Sara,

Here is the information I sent on the old slides to get ready for Summer 2022 and beyond, and the schedule below it. We need to set up another schedule for the new slides for the next couple of years. You had asked for this email, I forgot it in the last email I just sent to you.

Thanks,  
John

John Rocha, Jr.  
Facilities Manager at Central Virginia Community College  
3506 Wards Road  
Lynchburg, Virginia, 24502  
Office: 1-434-832-7725 Mobile: 1-540-529-0563  
[rochaj@centralvirginia.edu](mailto:rochaj@centralvirginia.edu)



---

**From:** Rocha Jr., John <[RochaJ@centralvirginia.edu](mailto:RochaJ@centralvirginia.edu)>  
**Sent:** Wednesday, June 16, 2021 9:27 AM  
**To:** Perez, William <[perezw@centralvirginia.edu](mailto:perezw@centralvirginia.edu)>; McDaniel, Deanne <[McDanielD@centralvirginia.edu](mailto:McDanielD@centralvirginia.edu)>  
**Cc:** Rocha Jr., John <[RochaJ@centralvirginia.edu](mailto:RochaJ@centralvirginia.edu)>  
**Subject:** FW: MS4 Slide Presentations

Will/Deanne,

Here is the info again for the MS4 Slides and the order we need them..thanks for all you both do!!

John

John M. Rocha, Jr.  
Facilities Manager – Central Virginia Community College

3506 Wards Road  
Lynchburg, VA 24502-2498  
1-434-832-7725 or 1-540-529-0563

[RochaJ@centralvirginia.edu](mailto:RochaJ@centralvirginia.edu)



---

**From:** Rocha Jr., John <RochaJ@centralvirginia.edu>  
**Sent:** Monday, February 17, 2020 9:33 AM  
**To:** McDaniel, Deanne <McDanielD@centralvirginia.edu>  
**Cc:** Rocha Jr., John <RochaJ@centralvirginia.edu>  
**Subject:** MS4 Slide Presentations  
**Importance:** High

Hello Deanne!

When you get a chance, would you call me in reference to the attached slides for my MS4 program? We need to display them on our tv screens around campus in an certain order. If you would, please contact me so we can discuss. The slides would be shown and grouped as follows:

Group 1: Slides: Spring 2020, Fall 2021, Summer 2022

- 1: Impacts of Stormwater Runoff (Water goes into local rivers and Chesapeake Bay carrying sediment and pollution)
- 2: Sediment affects aquatic life
- 3: Fertilizer & Bacteria affect human recreation and wildlife
- 9: How can they help keep waterbodies clean

Group 2: Slides: Summer 2020, Spring 2021, Fall 2022

- 4: Stormwater Regulations
- 5: TMDL definition
- 6: Ches Bay TMDL
- 7: Local Impaired Waterways

Group 3: Slides: Fall 2020, Summer 2021, Spring 2022

- 1: Impacts of Stormwater Runoff
- 7: Local Impaired Waterways (ph & bacteria)
- 8: Illicit Discharge definition
- 9: How you can help keep waterbodies clean?

I look forward to discussing these with you!

Thank-you,  
John



John M. Rocha, Jr.  
Facilities Supervisor – Central Virginia Community College  
3506 Wards Road  
Lynchburg, VA 24502-2498  
1-434-832-7725 or 1-540-529-0563

[RochaJ@centralvirginia.edu](mailto:RochaJ@centralvirginia.edu)

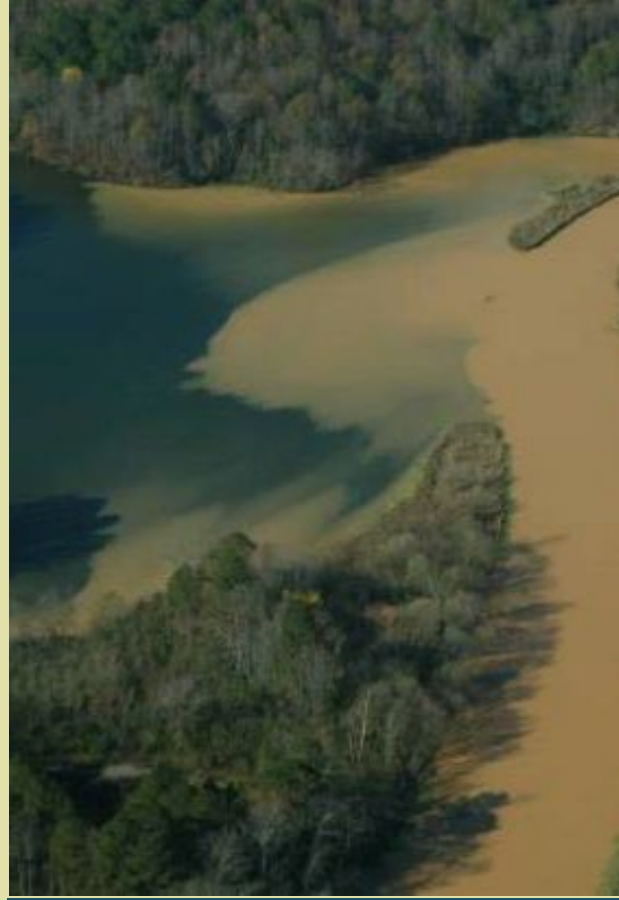




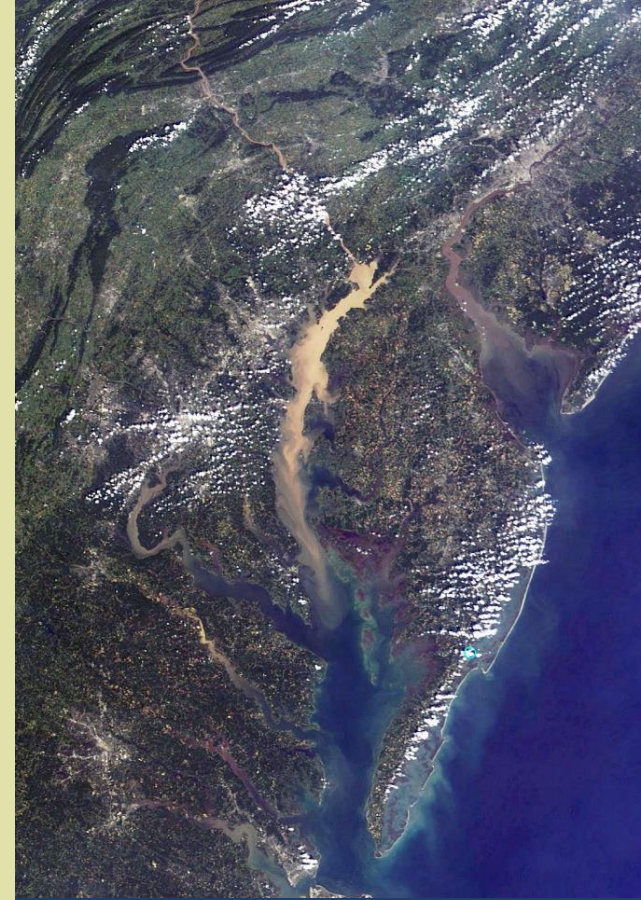
STORMWATER RUNOFF PICKS UP SEDIMENT & POLLUTANTS AFTER A RAINFALL.



SEDIMENT & POLLUTANT LADEN RUNOFF FLOWS INTO STORM SEWER SYSTEMS.



STORM SEWER INLETS DRAIN DIRECTLY INTO OUR LOCAL WATERBODIES.



OUR LOCAL WATERBODIES FLOW INTO THE CHESAPEAKE BAY & TO THE OCEAN.

# Impacts of Stormwater Runoff

Sediment from **construction sites** & **streambank erosion** from urbanization adversely affect the health of our local streams & rivers & the Chesapeake Bay.



## How Sediment Impacts Virginia's Waterbodies

---

- Clogs fish gills causing **death**
- Creates a muddy bottom unsuitable for **spawning** beds
- Reduces **visibility** for fish to locate prey causing
- Decreases water depth resulting in an increase of **temperature** causing fish to relocate
- Stunts plant growth due to reduced **light** penetration
- Interferes with navigation, flood control, **recreation** & fishing industries



# EFFECTS OF FERTILIZERS & BACTERIA ON THE ENVIRONMENT



Nitrogen and Phosphorous in **fertilizers** cause **algae** blooms in waterbodies.

Improperly disposed of **animal waste and human waste** from sanitary overflows cause high levels of **bacteria** (E.coli) in waterbodies.

**Algae** create toxins and excessive **E.coli** makes waterbodies **unsafe** for swimming and **unhealthy** for humans and wildlife consumption.



# STORMWATER REGULATIONS

## WHY WE HAVE TO?

Federal Clean Water Act

## WHO SAYS?

Virginia Laws and Regulations

MS4 General Permit

Construction General Permit

VA Stormwater Management Program

Erosion & Sediment Control

## WHERE APPLICABLE?

MS4 General Permit Holder

State properties within the census urbanized area



Municipal Separate Storm Sewer System (MS4):

- Collects & conveys stormwater
  - Potential to convey pollutants downstream
  - Ultimately leads to a point discharge (outfall) at a natural drainage way
- Activities/operations draining to outfalls regulated within a Census Urbanized Area



## TOTAL MAXIMUM DAILY LOAD (TMDL)

---

**TMDL** is a plan (pollution diet) that establishes the maximum amount of a pollutant a waterbody can hold & meet water quality standards.

**WLA** is the quantity of the pollutant (sediment, nitrogen, bacteria, etc.) that may be discharged.

Waterbodies are tested & those that do not meet water quality standards are given impairments for the pollutant(s) of concern (POC).

MS4s are assigned a WLA for the POC & must meet annual reductions requirements per a TMDL Action Plan.



# CHESAPEAKE BAY TMDL ACTION PLAN

CVCC implements a Chesapeake Bay TMDL Action Plan to reduce the Chesapeake Bay Pollutants of Concern (POC) which are Nitrogen, Phosphorous & Sediment.

CVCC is required to annually meet POC reductions based upon the amount of impervious and pervious surfaces on campus.

Implements a MS4 Program to educate the public on pollution prevention & an IDDE Program to detect & eliminate illicit discharges that occur on campus.

Adheres to construction laws & regulations to reduce POC from land disturbance activities & maintains stormwater management facilities after construction.

Prevents pollution from daily maintenance & operation activities by implementing good housekeeping procedures such as regular street sweeping contributing towards POC reductions.

Implements a Nutrient Management Plan & utilizes best management practices for pesticide application to reduce POC applied in the form of fertilizers & pesticides on campus.



# LOCAL IMPAIRED WATERWAYS

CVCC directly discharges into an unnamed tributary to Burton Creek.

Burton Creek is designated as an impaired waterway because of bacteria.

Pollutant sources of bacteria are livestock, pet waste and sanitary sewer overflows.

CVCC manages sanitary sewer overflows in order to minimize stream impacts. You can minimize stream degradation by picking up your pet's waste.







# ILLICIT DISCHARGE

Any discharge that enters the storm drain system or a natural drainage way on campus that is **not composed entirely of stormwater**.

To report an illicit discharge, spill or an improper disposal email [facilities@centralvirginia.edu](mailto:facilities@centralvirginia.edu) or call the Facilities Department at **434.832.7736**.

For more information visit CVCC's stormwater website at <https://centralvirginia.edu/Facilities-Management>





# HOW YOU CAN HELP KEEP WATERBODIES CLEAN?

---

- Limit landscape additives such as lime & potash only in amounts needed & at appropriate times especially never before a rain event.
- Properly store & dispose of chemicals. Quickly clean-up spilled chemicals & properly dispose of the materials used to clean-up spills.
- Pick-up pet waste & properly dispose in the trash.
- Never dump anything down storm drains.
- Place litter & cigarette butts in proper receptacles.
- Utilize recycling programs.
- Promptly repair vehicle & equipment leaks.
- Wash vehicles at a commercial car wash instead of in a driveway or parking lot.
- Properly dispose of household waste items.

## Appendix B: Documentation of Public Involvement Activities

## Public Involvement Activity #1



Reply all Delete Report ...

## RE: Central Virginia Community College MS4 Program Awareness Announcement and Bird Sketch

This message was sent with High importance.



Rocha Jr., John

To: Everyone

Cc: SRilveria@wetlands.com; Schrinel, Chris <CSchrinel@wetlands.com>

Like Reply Reply all Forward Share ...

Tue 5/17/2022 10:55 AM

Good Morning!

To all CVCC Faculty, Students and Staff,

As summer gets closer, we want to remind everyone of CVCC'S commitment to keep our Stormwater systems clean here on campus by bringing awareness once again to our MS4 Stormwater program. We are required to monitor, and control, to the best of our ability, the amount of pollutants that enter our stormwater drains here on campus. By working together with our students and staff, we can cut down on the number of pollutants that could enter our water streams. These pollutants can be something as simple as trash like fast food wrappers, cigarette butts, or more serious pollutants such as chemicals, oil, gases, etc. that enter our storm water drains after being dumped on our parking lots or sidewalks. The pollutants could eventually find their way to our lakes, rivers, and streams, and could hinder our ability to enjoy and see nature as we would like to. Water pollution not only impacts our recreational activities that we love such as swimming, boating, and fishing, but it also affects wildlife that depend on our water sources to survive. Due to strict DEQ regulations, CVCC has implemented, and is required to follow a plan for Stormwater Management here on Campus. You can find a copy on our website at : <https://centralvirginia.edu/Facilities-Management> . Please see the attached a brochure that explains more about stormwater runoff, and how pollutants can lead to what is called an "Illicit Discharge", which are more significant. The college brings in a street sweeping crew to vacuum and sweep the parking lots and roads leading into campus to help cut down on the pollutants that could possibly enter our stormwater drains.

**There are several ways in which you can learn a little more about the MS4 program here at CVCC:**

1. Read the attached brochure about stormwater runoff and the impact it has on our environment and look at the attached flyer.
2. Go to our website @ <http://centralvirginia.edu/Campus-Life/Locations-Facilities/Facilities-Management/MS4-PSA-Videos> and watch several fun, short, Public Service Announcements that show a **ducks view** of how pollution affects our environment. The clips are very short, and we get credit for you watching them, so please go by and check them out!
3. Visit our main website @ <https://centralvirginia.edu/Facilities-Management> to learn more about our MS4 Program documentation we are required to maintain and abide by. Here you will find a **Good Housekeeping and Pollution Prevention Manual** that is very well written that has a lot of good information in it for your reference.

## RE: Central Virginia Community College MS4 Program Awareness Announcement and Bird Sketch

! This message was sent with High importance.



Rocha Jr., John

To: Everyone

Cc: SRilveria@wetlands.com; Schrinel, Chris <CSchrinel@wetlands.com>



Tue 5/17/2022 10:55 AM

### James River

<https://jrac-va.org/>

James River State Park – Paddlers and Walkers

751 Park Road, Gladstone, VA 24553

Volunteers will be cleaning trash from the river and shoreline between Bent Creek and the park, which is about a 6 1/2-mile stretch of the James. Canoes, life vests, paddles and a guide will be provided to volunteers. Please come planning to get wet! Volunteers will be in and out of the boats to retrieve trash.

Check out their website for more information and announcements for upcoming Clean-up dates.

We take great pride in keeping our campus clean here at Central Virginia Community College. If you see something that needs to be addressed, please let our facilities Department know and we will address it. Please consider visiting our website for more information at <https://centralvirginia.edu/Facilities-Management>.

### And finally...Calling All Artist!!!

-  
We need your help! We have many types of wildlife here on campus that could be affected by trash or litter that is not placed in the appropriate trash receptacles. The litter, if laying on the ground, can cause problems for the wildlife that find it, or could make its way into our storm drains and water streams. Our grounds crew does a fantastic job of keeping our campus clean, but they can't do it alone. Continue to throw your trash in the appropriate containers so the wildlife cannot get to it, if you see it laying around somewhere, let us know! We also ask that you do not feed the birds or groundhogs when you see them on campus. We do not want to help the groundhog population multiply and have them removed from campus.

As part of our educational outreach, we are looking into posting some new exterior signage about the groundhogs and birds and their environmental impact on campus. **Here is where I need your help!** I am looking for volunteers to submit a black and white original drawing, or a black and white picture that you have taken of a **bird** that resides on campus that we could possibly use on one or more of the exterior signs we will be putting up as part of a MS4 sign design. The picture or drawing should be no bigger than an 8 ½ x 11, and will have to be scanned and edited, and the owner would have to agree to release the picture or drawing so the college could use it at their discretion.

We only want your original drawings or pictures please. We have so many talented artist and photographers amongst us, now is your chance to shine!!

Scan and Submit your Bird Pictures to [facilities@centralvirginia.edu](mailto:facilities@centralvirginia.edu) by **June 15<sup>th</sup>, 2022**. The Facilities Team will review all submissions and see if we can find the right picture to use for our new sign. If your artwork or picture is chosen, you will be notified. **This is open to all Faculty, Staff and Students!**

I look forward to seeing what you can do! Remember I need them by June 15th!

## Public Involvement Activity #2



Reply all Delete Report ...

## RE: Central Virginia Community College MS4 Program Awareness Announcement and Bird Sketch

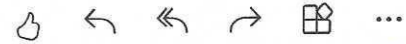
This message was sent with High importance.



Rocha Jr., John

To: Everyone

Cc: SRilveria@wetlands.com; Schrinel, Chris <CSchrinel@wetlands.com>



Tue 5/17/2022 10:55 AM

Good Morning!

To all CVCC Faculty, Students and Staff,

As summer gets closer, we want to remind everyone of CVCC'S commitment to keep our Stormwater systems clean here on campus by bringing awareness once again to our MS4 Stormwater program. We are required to monitor, and control, to the best of our ability, the amount of pollutants that enter our stormwater drains here on campus. By working together with our students and staff, we can cut down on the number of pollutants that could enter our water streams. These pollutants can be something as simple as trash like fast food wrappers, cigarette butts, or more serious pollutants such as chemicals, oil, gases, etc. that enter our storm water drains after being dumped on our parking lots or sidewalks. The pollutants could eventually find their way to our lakes, rivers, and streams, and could hinder our ability to enjoy and see nature as we would like to. Water pollution not only impacts our recreational activities that we love such as swimming, boating, and fishing, but it also affects wildlife that depend on our water sources to survive. Due to strict DEQ regulations, CVCC has implemented, and is required to follow a plan for Stormwater Management here on Campus. You can find a copy on our website at : <https://centralvirginia.edu/Facilities-Management> . Please see the attached a brochure that explains more about stormwater runoff, and how pollutants can lead to what is called an "Illicit Discharge", which are more significant. The college brings in a street sweeping crew to vacuum and sweep the parking lots and roads leading into campus to help cut down on the pollutants that could possibly enter our stormwater drains.

**There are several ways in which you can learn a little more about the MS4 program here at CVCC:**

1. Read the attached brochure about stormwater runoff and the impact it has on our environment and look at the attached flyer.
2. Go to our website @ <http://centralvirginia.edu/Campus-Life/Locations-Facilities/Facilities-Management/MS4-PSA-Videos> and watch several fun, short, Public Service Announcements that show a **ducks view** of how pollution affects our environment. The clips are very short, and we get credit for you watching them, so please go by and check them out!
3. Visit our main website @ <https://centralvirginia.edu/Facilities-Management> to learn more about our MS4 Program documentation we are required to maintain and abide by. Here you will find a **Good Housekeeping and Pollution Prevention Manual** that is very well written that has a lot of good information in it for your reference.



Reply all
 Delete
 Report
 ...

## Central Virginia Community College MS4 Program Awareness Announcement

! This message was sent with High importance.

! You replied on Tue 5/17/2022 10:55 AM



Rocha Jr., John

To: Everyone

Cc: Rocha Jr., John; SRilveria@wetlands.com; Schrinel, Chris <CSchrinel@wet

...

Thu 2/17/2022 12:08 PM



CVCC PEOP.pdf  
950 KB



CVCC Stormwater Poster\_Stu...  
188 KB



2 attachments (1 MB) Save all to OneDrive - Central Virginia Community College Download all

Good Afternoon!

To all CVCC Faculty, Students and Staff,

As spring gets closer, we want to remind everyone of CVCC'S commitment to keep our Stormwater systems clean here on campus by bringing awareness once again to our MS4 Stormwater program. We are required to monitor, and control, to the best of our ability, the amount of pollutants that enter our stormwater drains here on campus. By working together with our students and staff, we can cut down on the number of pollutants that enter our water streams. These pollutants can be something as simple as trash like fast food wrappers, cigarette butts, or more serious pollutants such as chemicals, oil, gases, etc. that enter our storm water drains after being dumped in our parking lots or sidewalks. The pollutants could eventually find their way to our lakes, rivers, and streams, and could hinder our ability to enjoy and see nature as we would like to. Water pollution not only impacts our recreational activities that we love such as swimming, boating, and fishing, but it also affects wildlife that depend on our water sources to survive. Due to strict DEQ regulations, CVCC has implemented, and is required to follow a plan for Stormwater Management here on Campus. You can find a copy on our website at : <https://centralvirginia.edu/Facilities-Management> . Please see the attached a brochure that explains more about stormwater runoff, and how pollutants can lead to what is called an "Illicit Discharge", which are more significant. The college will be bringing in a street sweeping crew soon to vacuum and sweep the parking lots and roads leading into campus to help cut down on the pollutants that could possibly enter our stormwater drains.

There are several ways in which you can learn a little more about the MS4 program here at CVCC:

1. Read the attached brochure about stormwater runoff and the impact it has on our environment, and look at the attached flyer.
2. Go to our website @ <http://centralvirginia.edu/Campus-Life/Locations-Facilities/Facilities-Management/MS4-PSA-Videos> and watch several fun, short, Public Service Announcements that show a **ducks view** of how pollution affects our environment. The clips are very short, and we get credit for you watching them, so please go by and check them out!

All Web Traffic  
Pages  
20210701-20220629

Links to data:  
Dataset1  
Dataset2

MS4 Traffic on Website  
07/01/21 - 06/29/22  
Duck Videos

Page	Page views	Unique Page views	Avg. Time on Page	Entrances	Bounce Rate	% Exit	Page Value
/Campus-Life/Locations-Facilities/Facilities-Management/MS4-PSA-Videos	96	26	24.90	22	45.45%	17.71%	0.00
/Campus-Life/Locations-Facilities/Facilities-Management/MS4-PSA-Videos/Rubber-Duck	18	14	130.86	1	100.00%	22.22%	0.00
/Campus-Life/Locations-Facilities/Facilities-Management/MS4-PSA-Videos/Duckman	17	13	28.08	3	66.67%	23.53%	0.00
/Campus-Life/Locations-Facilities/Facilities-Management/MS4-PSA-Videos/Pet-Waste	16	12	44.79	1	0.00%	12.50%	0.00
/Campus-Life/Locations-Facilities/Facilities-Management/MS4-PSA-Videos/Devil-Ducks	14	11	35.31	0	0.00%	7.14%	0.00
/Campus-Life/Locations-Facilities/Facilities-Management/MS4-PSA-Videos/Rake-Up,-Sweep-Up	12	8	50.67	1	100.00%	25.00%	0.00
/Campus-Life/Locations-Facilities/Facilities-Management/MS4-PSA-Videos/Rubber-Duck-(Espanol)	9	7	15.50	1	100.00%	11.11%	0.00
	182	91	38.87	29	51.72%	17.58%	0.00

Day Index	Page views	Day Index	Page views	Day Index	Page views	Day Index	Page views	Day Index	Page views	Day Index	Page views	Day Index	Page views	Day Index	Page views	Day Index	Page views
7/1/2021	0	8/15/2021	0	9/29/2021	0	11/13/2021	0	12/28/2021	0	2/11/2022	0	3/28/2022	0	5/12/2022	0	6/26/2022	0
7/2/2021	0	8/16/2021	0	9/30/2021	0	11/14/2021	0	12/29/2021	0	2/12/2022	0	3/29/2022	0	5/13/2022	0	6/27/2022	0
7/3/2021	0	8/17/2021	0	10/1/2021	0	11/15/2021	0	12/30/2021	0	2/13/2022	0	3/30/2022	0	5/14/2022	0	6/28/2022	0
7/4/2021	0	8/18/2021	0	10/2/2021	0	11/16/2021	0	12/31/2021	0	2/14/2022	0	3/31/2022	0	5/15/2022	0	6/29/2022	0
7/5/2021	0	8/19/2021	0	10/3/2021	0	11/17/2021	0	1/1/2022	0	2/15/2022	0	4/1/2022	0	5/16/2022	0		182
7/6/2021	0	8/20/2021	0	10/4/2021	0	11/18/2021	0	1/2/2022	0	2/16/2022	0	4/2/2022	0	5/17/2022	54		
7/7/2021	0	8/21/2021	0	10/5/2021	0	11/19/2021	0	1/3/2022	0	2/17/2022	57	4/3/2022	0	5/18/2022	0		
7/8/2021	0	8/22/2021	0	10/6/2021	0	11/20/2021	0	1/4/2022	1	2/18/2022	0	4/4/2022	0	5/19/2022	0		
7/9/2021	1	8/23/2021	0	10/7/2021	0	11/21/2021	0	1/5/2022	0	2/19/2022	0	4/5/2022	1	5/20/2022	2		
7/10/2021	0	8/24/2021	0	10/8/2021	0	11/22/2021	0	1/6/2022	0	2/20/2022	0	4/6/2022	2	5/21/2022	0		
7/11/2021	0	8/25/2021	0	10/9/2021	0	11/23/2021	0	1/7/2022	0	2/21/2022	0	4/7/2022	0	5/22/2022	0		
7/12/2021	0	8/26/2021	0	10/10/2021	0	11/24/2021	0	1/8/2022	0	2/22/2022	0	4/8/2022	13	5/23/2022	0		
7/13/2021	0	8/27/2021	0	10/11/2021	0	11/25/2021	0	1/9/2022	0	2/23/2022	0	4/9/2022	0	5/24/2022	0		
7/14/2021	0	8/28/2021	0	10/12/2021	0	11/26/2021	0	1/10/2022	0	2/24/2022	0	4/10/2022	0	5/25/2022	0		
7/15/2021	1	8/29/2021	0	10/13/2021	0	11/27/2021	0	1/11/2022	0	2/25/2022	0	4/11/2022	0	5/26/2022	0		
7/16/2021	0	8/30/2021	0	10/14/2021	0	11/28/2021	0	1/12/2022	0	2/26/2022	0	4/12/2022	0	5/27/2022	0		
7/17/2021	0	8/31/2021	1	10/15/2021	0	11/29/2021	0	1/13/2022	0	2/27/2022	0	4/13/2022	1	5/28/2022	0		
7/18/2021	0	9/1/2021	0	10/16/2021	0	11/30/2021	0	1/14/2022	0	2/28/2022	0	4/14/2022	0	5/29/2022	0		
7/19/2021	0	9/2/2021	0	10/17/2021	0	12/1/2021	0	1/15/2022	0	3/1/2022	0	4/15/2022	0	5/30/2022	0		
7/20/2021	0	9/3/2021	0	10/18/2021	0	12/2/2021	0	1/16/2022	0	3/2/2022	11	4/16/2022	0	5/31/2022	0		
7/21/2021	0	9/4/2021	0	10/19/2021	0	12/3/2021	0	1/17/2022	0	3/3/2022	0	4/17/2022	0	6/1/2022	0		
7/22/2021	0	9/5/2021	0	10/20/2021	0	12/4/2021	0	1/18/2022	0	3/4/2022	0	4/18/2022	0	6/2/2022	0		
7/23/2021	0	9/6/2021	0	10/21/2021	0	12/5/2021	0	1/19/2022	0	3/5/2022	0	4/19/2022	0	6/3/2022	0		
7/24/2021	0	9/7/2021	0	10/22/2021	0	12/6/2021	0	1/20/2022	0	3/6/2022	0	4/20/2022	1	6/4/2022	0		
7/25/2021	0	9/8/2021	0	10/23/2021	0	12/7/2021	0	1/21/2022	1	3/7/2022	0	4/21/2022	0	6/5/2022	0		
7/26/2021	0	9/9/2021	0	10/24/2021	0	12/8/2021	0	1/22/2022	0	3/8/2022	0	4/22/2022	0	6/6/2022	0		
7/27/2021	0	9/10/2021	0	10/25/2021	0	12/9/2021	0	1/23/2022	0	3/9/2022	0	4/23/2022	0	6/7/2022	2		
7/28/2021	0	9/11/2021	0	10/26/2021	0	12/10/2021	0	1/24/2022	0	3/10/2022	0	4/24/2022	0	6/8/2022	0		
7/29/2021	0	9/12/2021	0	10/27/2021	0	12/11/2021	0	1/25/2022	0	3/11/2022	0	4/25/2022	0	6/9/2022	0		
7/30/2021	0	9/13/2021	0	10/28/2021	0	12/12/2021	0	1/26/2022	0	3/12/2022	0	4/26/2022	0	6/10/2022	0		
7/31/2021	0	9/14/2021	0	10/29/2021	0	12/13/2021	0	1/27/2022	0	3/13/2022	0	4/27/2022	0	6/11/2022	0		
8/1/2021	0	9/15/2021	0	10/30/2021	0	12/14/2021	0	1/28/2022	1	3/14/2022	0	4/28/2022	0	6/12/2022	0		
8/2/2021	0	9/16/2021	0	10/31/2021	0	12/15/2021	0	1/29/2022	0	3/15/2022	0	4/29/2022	0	6/13/2022	0		
8/3/2021	0	9/17/2021	0	11/1/2021	0	12/16/2021	1	1/30/2022	0	3/16/2022	0	4/30/2022	0	6/14/2022	0		
8/4/2021	0	9/18/2021	0	11/2/2021	0	12/17/2021	0	1/31/2022	0	3/17/2022	0	5/1/2022	0	6/15/2022	0		
8/5/2021	0	9/19/2021	0	11/3/2021	0	12/18/2021	0	2/1/2022	0	3/18/2022	0	5/2/2022	2	6/16/2022	0		
8/6/2021	0	9/20/2021	0	11/4/2021	0	12/19/2021	0	2/2/2022	0	3/19/2022	0	5/3/2022	0	6/17/2022	2		
8/7/2021	0	9/21/2021	1	11/5/2021	2	12/20/2021	0	2/3/2022	1	3/20/2022	0	5/4/2022	0	6/18/2022	0		
8/8/2021	1	9/22/2021	5	11/6/2021	0	12/21/2021	0	2/4/2022	0	3/21/2022	0	5/5/2022	0	6/19/2022	0		
8/9/2021	1	9/23/2021	0	11/7/2021	0	12/22/2021	0	2/5/2022	0	3/22/2022	0	5/6/2022	0	6/20/2022	0		
8/10/2021	0	9/24/2021	0	11/8/2021	0	12/23/2021	0	2/6/2022	0	3/23/2022	0	5/7/2022	0	6/21/2022	0		
8/11/2021	0	9/25/2021	0	11/9/2021	0	12/24/2021	0	2/7/2022	0	3/24/2022	0	5/8/2022	0	6/22/2022	0		
8/12/2021	0	9/26/2021	0	11/10/2021	0	12/25/2021	0	2/8/2022	0	3/25/2022	0	5/9/2022	0	6/23/2022	0		
8/13/2021	0	9/27/2021	0	11/11/2021	0	12/26/2021	0	2/9/2022	0	3/26/2022	0	5/10/2022	14	6/24/2022	0		
8/14/2021	0	9/28/2021	0	11/12/2021	0	12/27/2021	0	2/10/2022	0	3/27/2022	0	5/11/2022	2	6/25/2022	0		

### Public Involvement Activity #3





# CVCC's Graduation

May 12, 2022

Please join us for a reception:

**W**here:

Liberty University's  
Vines Center's 1<sup>st</sup> Floor  
Media Room/Tunnel Area

**Time:** 6 — 7 p.m.

The Graduation Ceremony will begin at 7 p.m.

## Public Involvement Activity #4

⏮ Reply all ▾ 🗑 Delete ⚠ Report ▾ ...

## Helping out on the trail and Pollinator Garden.

RT

Ranson, Teresa

To: Rocha Jr., John; Scruggs, Trevor

Cc: Shannon Hixon <hixonsb@lcsedu.net>

👍 ↶ ⏮ ↷ 📧 ...

Fri 3/18/2022 9:47 AM

Good Morning John and Trevor,

I just wanted to make both of you aware that Shannon Hixon, a special ed teacher from Lynchburg City Schools, housed here and working with our own CVCC Post-Graduate Transition Program, will be helping me out with some trail maintenance and cleaning here on campus with some of her students in case you see her out there. She has reached out to me and asked if her students could help out in any way to help them learn life skills and self-dependency. She will probably be getting her own tools such as rakes, loppers, ect., but in the mean time she may ask to use some of your tools if she is working when I am not around.

Please feel free to email or call me if you have any questions or concerns. I have included her in the CC list so you will have her email contact as well.

thanks and hope you both have a GREAT weekend!

*Teresa H. Ranson*

Instructor of Biology & Environmental Science

Central Virginia Comm College

3506 Wards Rd.

Lynchburg, VA 24502

[ransont@cvcc.vccs.edu](mailto:ransont@cvcc.vccs.edu)

(434) 832-7714

*Tug on anything at all and you'll find it connected to everything else in the universe.*

*John Muir*

↶ Reply

⏮ Reply all

↷ Forward



# CVCC Nature Trail

